

## REVIEW TEST 2 - Chapters 5, 6 and 7

**Note: Test #2 will be on Wednesday, July 18**

To prepare for the test, you may study the following:

- Quiz #3, Quiz #4
- Handout: Chapter 5 (see website for handout )
- Handout: 6.1 Rational Functions (see website for handout )
- Homework #3
- Textbook : Mid – Chapter Check Point – page 519
- Textbook: Review Exercises – page 555 Exercises # 80 – 101
- Textbook: Chapter 7 Test – page 557

### More practice

1. Simplify the following expressions. The final answer should have only positive exponents.

$$\begin{array}{l}
 \text{a) } \frac{6^{\frac{5}{6}}}{6^{\frac{1}{2}}} + 6^{\frac{1}{3}}(6^{-\frac{1}{2}}) \quad \text{b) } \left(\frac{2x^{-4}y}{x^5y^5}\right)^{-3} \left(\frac{4x^{-2}y^0}{x^7y^2}\right)^2 \quad \text{c) } \frac{\left(-2x^{\frac{3}{2}}y^{\frac{1}{3}}\right)^2 \left(3x^{\frac{1}{2}}y^5\right)^{\frac{1}{3}}}{(2x^2)^3(3y)} \quad \text{d) } \left(\frac{2x^{\frac{1}{2}}y}{x^{\frac{5}{2}}y^{-\frac{1}{3}}}\right)^{-\frac{2}{3}} \quad \text{e) } \left(\frac{x^{\frac{-5}{4}}y^{\frac{1}{3}}}{x^{-\frac{3}{4}}}\right)^{-6}
 \end{array}$$

2. Write each expression in simplest form:

$$\begin{array}{l}
 \text{a) } \sqrt{18u^3v^8} + 3v\sqrt{30u^5} \quad \text{b) } 2\sqrt{75} + 4\sqrt{12} - (2\sqrt{2} - \sqrt{3})(2\sqrt{2} + \sqrt{3}) \quad \text{c) } (3\sqrt{5} - 4)^2 + 2\sqrt{45}(5 - \sqrt{5}) \\
 \text{d) } -(3 + 2x)i - 2(2x - 3i)^2 \quad \text{e) } 2\sqrt[3]{x^4y^2} + 2x\sqrt[3]{xy^2}
 \end{array}$$

3. Simplify:

$$\begin{array}{l}
 \text{a) } \frac{9 - \sqrt{-72}}{12} \quad \text{b) } \frac{2 + \sqrt{-8}}{2} \quad \text{c) } \frac{-4 + \sqrt{-28}}{6}
 \end{array}$$

4. Let  $f(x) = x^2 - 2x + 2$ . Find  $f(1+i)$ ,  $f(2i)$ ,  $f(1-3i)$ .

5. If  $g(x) = x^2 - 6x - 4$ , find  $g(\sqrt{a+1} - \sqrt{a-1})$  and  $g(3 - \sqrt{13})$  (textbook #113/529).

6. Let  $f(x) = x^2$ . Find  $f(\sqrt{a+1} - \sqrt{a-1})$  and  $f(1 - 2\sqrt{3})$  (textbook #116/529).

7. Find the lengths of all sides of a right triangle whose legs are  $\sqrt{x-7}$  and  $\sqrt{x}$ , respectively, and whose hypotenuse is  $1+\sqrt{x}$  (textbook # 74 page 541).

8.  $f(x) = \sqrt{x+16} - \sqrt{x} - 2$  and  $g(x) = \sqrt{2x-3} - \sqrt{2x} + 1$

a) Find the domain of each function.

b) Find the  $x$ -intercepts of the graph of each function without graphing the function (textbook #49, 50 page 540).

9. Find the domain and sketch the graph of each function. Find the range of each function.

a)  $f(x) = \sqrt{x+1}$       b)  $g(x) = \sqrt{3-x}$       c)  $h(x) = \sqrt{x} + 2$

10. Find the perimeter and area of a rectangle whose dimensions are given. Simplify as much as possible. Use correct units.

a) width  $2\sqrt{20}$  and length  $\sqrt{125}$

b) width  $\sqrt{80}$  and length  $4\sqrt{20}$  (textbook # 83, 84 page 518)

11. The total cost  $C$  for a producer to manufacture  $n$  units of a good is given by  $C(n) = 5000 + 50n$ .

Define the average cost  $A(n)$ , for producing  $n$  units by the equation  $A(n) = \frac{C(n)}{n}$ .

a) Evaluate and interpret the economic significance of:

i)  $C(1)$       ii)  $C(100)$       iii)  $C(1000)$       iv)  $C(10,000)$

b) Evaluate and interpret the economic significance of:

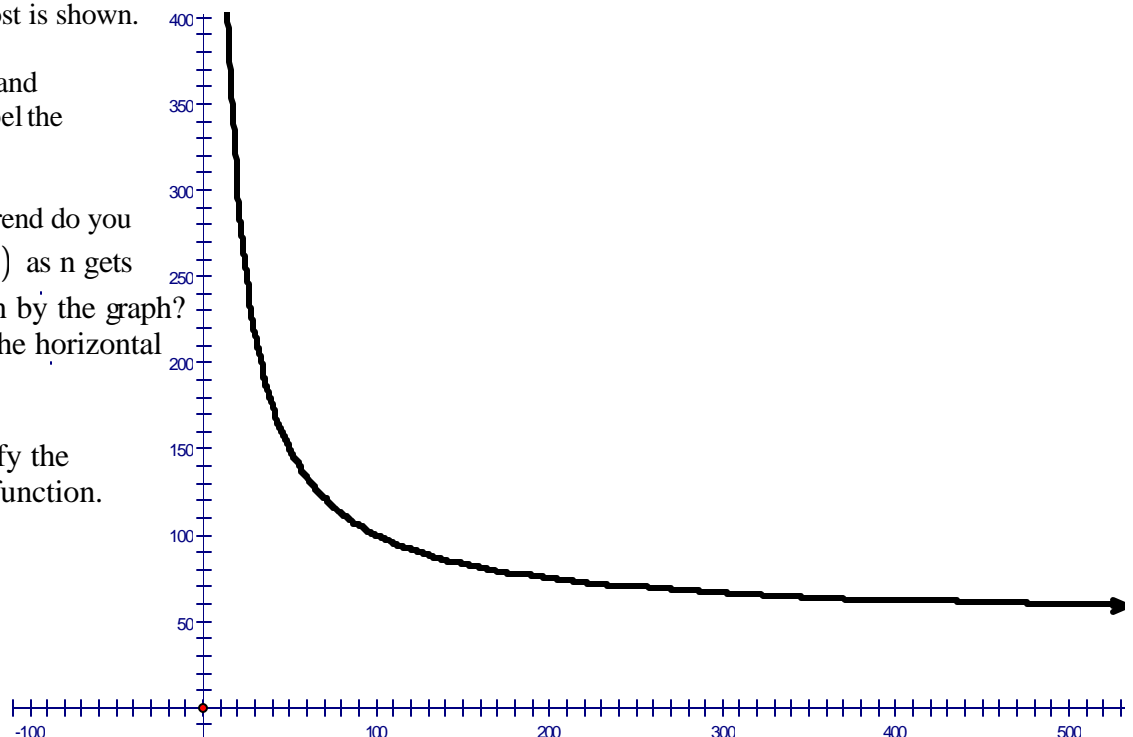
i)  $A(1)$       ii)  $A(100)$       iii)  $A(1000)$       iv)  $A(10,000)$

The graph of the average cost is shown.

c) Identify the independent and dependent variables and label the axes accordingly.

d) Based on part (b), what trend do you notice in the values of  $A(n)$  as  $n$  gets larger? How is this shown by the graph? What is the equation of the horizontal asymptote of the graph?

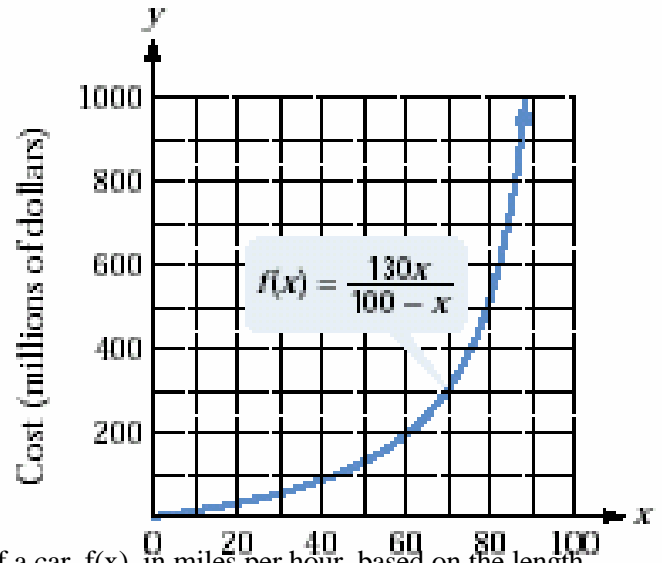
e) Using the graph, identify the domain and range of the function.



12. The rational function  $f(x) = \frac{130x}{100-x}$

models the cost,  $f(x)$ , in millions of dollars, to inoculate  $x\%$  of the population against a particular strain of flu. The graph of the rational function is shown. Answer the following questions:

- Find and interpret  $f(60)$ . Identify the point on the graph.
- What value of  $x$  must be excluded from the domain of the function?
- What happens to the cost as  $x$  approaches 100? How is this shown by the graph?



13. Police use the function  $f(x) = \sqrt{20x}$  to estimate the speed of a car,  $f(x)$ , in miles per hour, based on the length,  $x$ , in feet, of its skid marks upon sudden braking on a dry asphalt road. A motorist is involved in an accident. A police officer measures the car's skid mark to be 45 feet long. Estimate the speed at which the motorist was traveling before braking. If the posted speed limit is 35 miles per hour and the motorist tells the officer she was not speeding, should the officer believe her? Explain.

14. Deer are placed into a newly acquired habitat. The deer population over time is modeled by a rational function whose graph is shown in the figure. Use the graph to answer each of the following questions:

- How many deer were introduced into the habitat?
- What is the population after 25 years?
- What is the equation of the horizontal asymptote shown in the figure? What does this mean in terms of the deer population?

