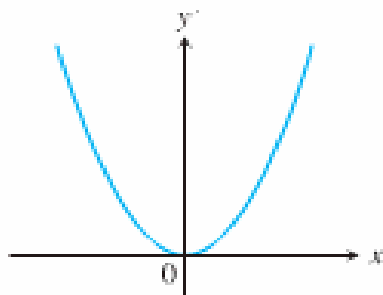


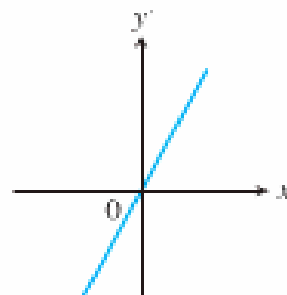
Section 3.1 – The Derivative of a Function
Graphing the Derivative

Exercises #27 – 30 / 3.1

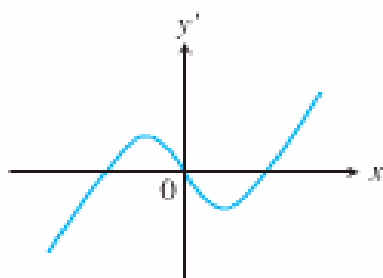
Match the functions graphed in #27 – 30 with the derivatives graphed in the accompanying figures a) – d).



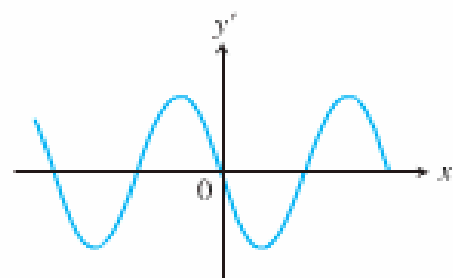
(a)



(b)

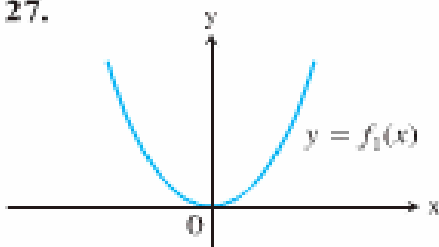


(c)

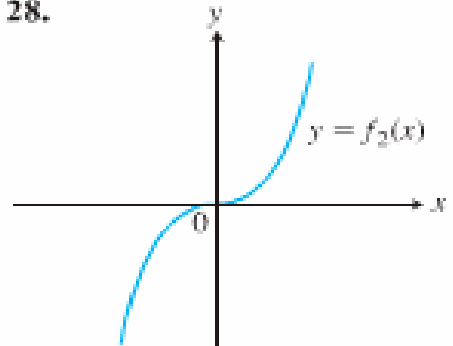


(d)

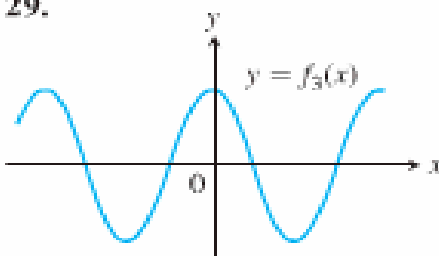
27.



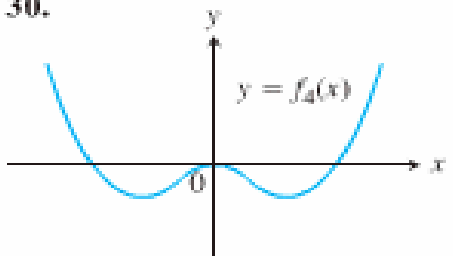
28.



29.



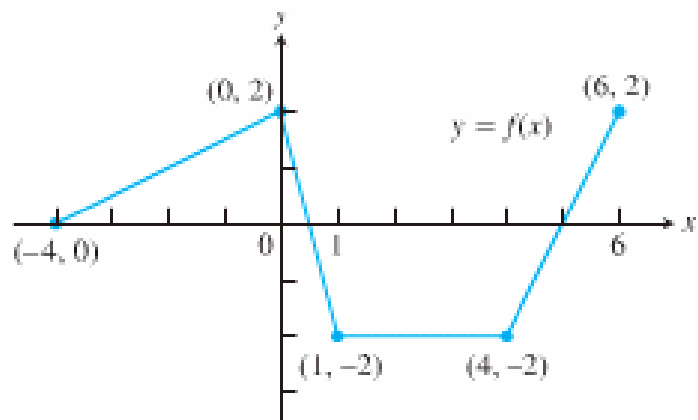
30.



Exercise #31 / 3.1

a) The graph of the accompanying figure is made of line segments joined end to end. At which points of the interval $[-4,6]$ is f' not defined? Give reasons for your answer.

b) Graph the derivative of f .



Exercises #35 , 38 / 3.1

Compare the right-hand and left-hand derivatives to show that the functions are not differentiable at the point P.

